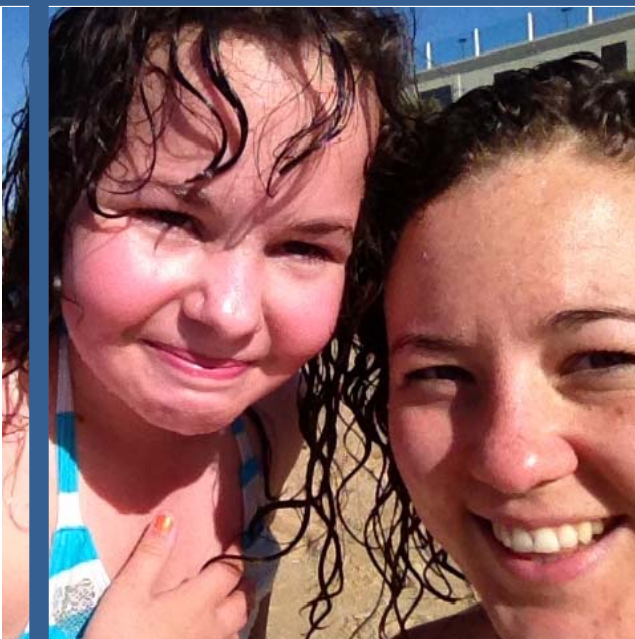




TRY

AUSTRALIA
hand in hand

Annual Report 2012/13



ASSOCIATED ORGANISATIONS



MISSION, VISION & VALUES

Mission

To give families and individuals the opportunities to reach their potential

Vision

To be recognised as a national leader in our programs

Values

Innovation

- We listen and apply new ideas and actions

Sustainability

- Our people are the best in their field
- Our programs are environmentally responsible, fiscally sound and of high quality

Inclusion

- Our culture is diverse and welcoming
- Our services are available to all

Integrity

- We treat everyone fairly
- Our decisions balance risk, value and creativity.

CONTENTS

Locations & Contacts	1 – 3
Organisational Chart	4
Message from the Chairman & Chief Executive Officer	5
Board of Directors	6
Executive & Management Teams	7
Children’s Services Report	8 - 9
Youth Mentoring Report	10 - 11
Dancing School Report	12
Cadet Units	12
Training Report	13 - 14
Major Supporters, Trusts and Foundations	15
Roll of Honour	16

LOCATIONS & CONTACT DETAILS

CORPORATE OFFICES

Government Pavilion
Showgrounds Village – P1
320 – 380 Epsom Road Flemington 3031
☎ 9347 2655
☎ 9348 1273
✉ info@try.org.au
W: www.try.org.au



SUBURBAN & REGIONAL OFFICES

Morwell Office

Cnr Commercial and Driffield Roads
MORWELL 3840
☎ 5133 6879
✉ morwell@try.org.au

Prahran Dancing School

12 Little Chapel Street PRAHRAN 3181
✉ info@try.org.au

FUNDRAISING

Clayton Community Bingo Centre

Unit 18 14 – 26 Audsley Street
CLAYTON 3168
☎ 9544 2958
✉ clayton@try.org.au

Street Collections

Unit 18 14 – 26 Audsley Street
CLAYTON 3168
☎ 0418 584 410
✉ collections@try.org.au

KINDERGARTENS & CHILD CARE

Altona Gate Kindergarten

80 Walker Close ALTONA NORTH 3025
☎ 9314 7895
✉ altonagate@try.org.au

Bellevue Hill Preschool

14 Royal Crescent HILLSIDE 3037
☎ 9390 4701
✉ bellevuehill@try.org.au

Coburg Preschool

98 Bell Street COBURG 3058
☎ 9354 5227
✉ coburg@try.org.au

Crib Point Preschool

7 Cayley Avenue HMAS CERBERUS 3920
☎ 5983 9348
✉ cribpoint@try.org.au

Diggers Rest Preschool

Plumpton Road DIGGERS REST 3427
☎ 9740 1337
✉ diggersrest@try.org.au

Doncaster Gardens Preschool

53 Victoria Street DONCASTER 3108
☎ 9848 7737
✉ doncastergardens@try.org.au

Fairy Hills Kindergarten

7 Thyer Road EAST IVANHOE 3079
☎ 9499 5429
✉ fairyhills@try.org.au

Harbard Street Kindergarten

Harbard Street THOMASTOWN 3074
☎ 9465 8693
✉ harbardstreet@try.org.au

HE Kane Memorial Kindergarten

20A Volga Street HADFIELD 3046
☎ 9306 8908
✉ hekane@try.org.au

Kingsway Pre School

1 Kingsway MELTON 3337
☎ 9743 2691
✉ kingsway@try.org.au

Lancaster & Frank Harley House Childcare Centre

698 Malvern Road PRAHRAN 3082
☎ 9510 7385
✉ prahran@try.org.au

Laurel Street Kindergarten

Laurel Street WHITTLESEA 3757
☎ 9716 2153
✉ whittlesea@try.org.au

Melton West Preschool

2-4 West Melton Drive MELTON WEST 3337
☎ 9743 5914
✉ meltonwest@try.org.au

Mernda Village Kindergarten

70 Mernda Village Drive MERNDA 3754
☎ 9717 6066
✉ merndavillage@try.org.au

Mill Park Preschool

Mill Park Drive MILL PARK 3082
☎ 9404 2623
✉ millpark@try.org.au

Montmorency Occasional Care

16 Mountain View Road
MONTMORENCY 3094
☎ 9434 3131
✉ montmorency@try.org.au

Mt. Carberry Preschool

35 Exford Road MELTON SOUTH 3338
☎ 9743 5914
✉ mtcarberry@try.org.au

LOCATIONS & CONTACT DETAILS

KINDERGARTENS & CHILD CARE

North Cheltenham Kindergarten

71 Argus Street CHELTENHAM 3192

☎ 9583 7066

✉ northcheltenham@try.org.au

North West Brunswick Kindergarten

34 Rose Street BRUNSWICK 3056

☎ 9386 5676

✉ nwbrunswick@try.org.au

Oakbrook Preschool

36 Holroyd Drive EPPING 3076

☎ 9401 1695

✉ oakbrook@try.org.au

Parkwood Green Preschool

Cnr Community Hub & Catherine Drive
HILLSIDE 3037

☎ 8361 6506

✉ parkwoodgreen@try.org.au

Peninsula Montessori Centre

7 – 9 Frank Street FRANKSTON 3199

☎ 9783 2800

✉ pmc@try.org.au

Playford Children's Centre

3 Langford Drive PLAYFORD 5112

☎ (08) 8252 5032

✉ playford@try.org.au

Rockbank Preschool

1175-1177 Leakes Road Rockbank 3335

☎ 9747 1410

✉ rockbank@try.org.au

Roycroft Kindergarten

114 Roycroft Avenue MILL PARK 3082

☎ 9404 4369

✉ roycroft@try.org.au

Showgrounds Children's Centre

Government Pavilion

Showgrounds Village – P2

320 – 380 Epsom Road FLEMMINGTON 3031

☎ 9376 7486

✉ showgroundscs@try.org.au

South Melbourne Mission Kindergarten

Park Towers 185/332 Park Street

SOUTH MELBOURNE 3205

☎ 9699 9662

✉ southmelbourne@try.org.au

South Yarra Preschool

259 Malvern Road SOUTH YARRA 3141

☎ 9804 7569

✉ southyarra@try.org.au

Timboon Children's Centre

11 Hamilton Street TIMBOON 3268

☎ 5598 3020

✉ timboon@try.org.au

Westall Kindergarten

43-45 Westall Road CLAYTON SOUTH 3169

☎ 9546 7252

✉ westall@try.org.au

Whittlesea Child Care Centre

Laurel Street WHITTLESEA 3757

☎ 9716 2153

✉ whittlesea@try.org.au

Wirrigirri Preschool

2 Darebin Place CAROLINE SPRINGS 3023

☎ 9363 0244

✉ wirrigirri@try.org.au

OUT OF SCHOOL HOURS CARE

Birralee Primary School

Before / After School & Vacation Care

Heyington Avenue DONCASTER 3108

☎ 0402 733 267

Department of Human Services

Vacation Care

2/50 Lonsdale Street MELBOURNE 3000

☎ 0431 262 30

Gladstone Park Primary School

Before / After School Care

Taylor Drive, GLADSTONE PARK 3043

☎ 0425 354 807

Murrumbeena Primary School

Vacation Care

Hobart Street MURRUMBEENA 3163

☎ 0411 301 714

Pascoe Vale Primary School

Before / After School Care

Gaffney Street PASCOE VALE 3044

☎ 9354 1724

Sacred Heart Primary School

After School Care

1 Clifton Grove PRESTON 3072

☎ 0422 093 089

St. Anthony's Primary School

Before / After School Care

52 Austin Street ALPHINGTON 3078

☎ 0420 383 458

St. Joseph's Primary School

Before / After School Care

44 Mernda Village Drive MERNDA 2655

☎ 0449 227 751

LOCATIONS & CONTACT DETAILS

OUT OF SCHOOL HOURS

St. Mary's Parish Primary School

Before / After School & Vacation Care

Fir Street WHITTLESEA 3757

☎ 0412 788 390

St. Vincent de Paul Primary School

Before / After School Care

92-114 Woodland Street STRATHMORE 3041

☎ 0420 383 456

Tylden Primary School

After School Care

11 Clowes Street TYLDEN 3444

☎ 0416 987 219

YOUTH SERVICES

Big Brothers Big Sisters of Melbourne

Government Pavilion

Showgrounds Village – P1

320 – 380 Epsom Road FLEMINGTON 3031

☎ 9347 2655

☎ 9348 1273

✉ bbbs@bbbs.org.au

W: www.bbbs.org.au

BBBSM operates in the following regions:

HIGHLANDS

Po Box 583 BALLARAT 3353

Level 1 / 36 Camp Street BALLARAT 3353

☎ 5336 5031

✉ emma.hoare@bbbs.org.au

OUTER SOUTH EAST MELBOURNE

PO Box 2154 NARRE WARREN 3805

16/94 Abbott Road HALLAM 3803

☎ 8795 7999

☎ 8795 7794

✉ bbbsosem@bbbs.org.au

NORTH MELBOURNE

Study Support @ The Huddle

Learning and Life Centre

North Melbourne Football Club

Arden Street NORTH MELBOURNE 3051

WANGARATTA

PO Box 1236 WANGARATTA 3676

21 – 33 Handley Street WANGARATTA 3676

☎ 5721 8638

✉ adrian.ocallaghan@bbbs.org.au

CADET UNITS

30 ACU – Sunshine

101 Duke Street SUNSHINE 3020

32 ACU – Geelong

198 Myers Street GEELONG 3220

33 ACU – Wangaratta

5 Sisley Street WANGARATTA 3677

37 ACU – Wodonga

Buna Barracks BANDIANA NORTH 3694

38 ACU – Shepparton

Sobroan Street SHEPPARTON 3630

39 ACU – Watsonia

Herring Avenue MACLEOD 3085

300 ACU – Ballarat

Western Hwy Ring Rd BALLARAT 3350

301 ACU – Echuca

Ogilvie Street ECHUCA 3564

302 ACU – Oakleigh

1318 North Road HUNTINGDALE 3166

310 ACU – Dandenong

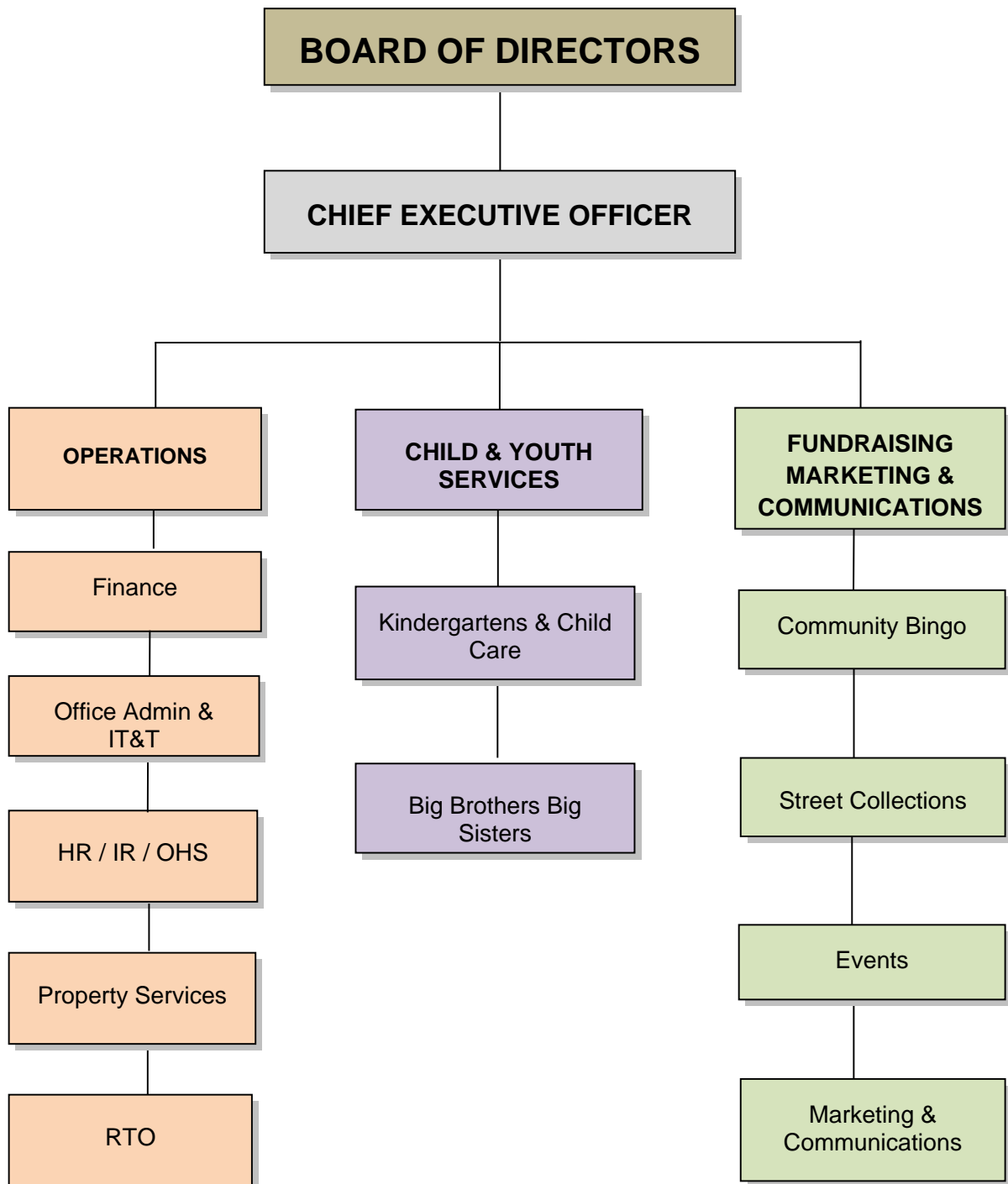
65 Princess Highway

DANDENONG SOUTH 3175

312 ACU – Broadford

BROADFORD 3658

ORGANISATIONAL CHART – Corporate Offices



MESSAGE FROM THE CHAIRMAN AND CHIEF EXECUTIVE OFFICER

Welcome to the TRY Australia Annual Report for 2012/13

This year TRY celebrates 130 years. Our founder, Mark William Forster would struggle to recognise us these days. We have changed significantly over the years but our intention to impact positively on the lives of young people remains the same.

We have a strong strategic focus to head back to our history and strengthen our programs to impact a greater number of young people.

This year has been a challenging one and as a board and senior management team we have learned some extremely valuable lessons that will stand us in good stead for our future.

We have had some significant restructure in the business and look forward to a new direction and focus as we prepare to make the TRY brand one that is known in the community for making a difference as we attract corporate sponsorship and brand ambassadors.

This year we farewelled Director Juliet Robinson from our Board and thank her sincerely for her great contribution to TRY. We welcomed Keith Louie and Rachel Porter onto the Board of Directors.

We also farewell CEO Damien Mowlam after 6 years as CEO and extend a warm welcome to our new CEO Julia Cabbage

We wish to thank our many stakeholders in assisting TRY to deliver a range of services to the wider community. We work with all levels of Government, numerous volunteer committees, Schools and other not for profit groups to deliver important activities to many communities across Victoria.

We would like to thank all Board Directors, Executive, staff and volunteers for their outstanding contributions.



Helen Robinett
Chairman

Julia Cabbage
Chief Executive Officer

BOARD OF DIRECTORS



Helen Robinett | *Chairman*

Director of Image Quest, Helen advises corporate and individual clients in developing comprehensive image-management strategies to ensure the team-reflect the image and branding of the company. Helen is a member of the Finance and Investment & Big Brothers Big Sisters Committees..



Jovita Gartlan

BA International Trade, BA. Business Management, Masters in Business Systems

Jovita is a Partner at Deloitte Australia. Jovita is a member of the Finance & Investments Committee



Vicki Key | *Vice Chair*

Diploma in Frontline Management, Cert IV Workplace Training & Assessment, Advanced Practice in Forensic Interviewing of Children

Vicki is retired from the Victoria Police and is a member of the BBBS Committee.



Keith Louie (appointed 26 February 2013)

Bachelor of Engineering (Honours), Chartered Engineer

Keith is currently a Director of several eCommerce ventures and also his personal consulting business Jordan Bridge Pty Ltd. He brings to these Boards skills & experience garnered from 25 years working in senior roles in eCommerce, retail, supply chain, management consulting, production management and financial services.



Craig Bryan | *Treasurer*

BA.Bus, Fellow of the Institute of Chartered Accountants

Craig is an Audit and Assurance Partner with Deloitte Touche Tohmatsu and is the Chair of the Finance and Investment Committee.



Peter Guy

B.Ec, LLB

Peter is a director of Kennedy Guy. He joined the firm in 1987 after working as in house counsel for a national company.

Peter was appointed as a partner to the firm in 1992 and is a member of the Finance and Investment Committee.



Basil Jenkins

MBA & BA Science

Basil has a commercial background at senior levels in the mining and engineering industries. Basil is a member of the Finance & Investment Committee.



Sharon Bates

BA Engineering (Hons), BA of Arts, Masters in Business Leadership, Graduate, AICD Company Directors Course

Sharon is a corporate strategist with specialist skills in business transformation and operations effectiveness. Sharon is Chair of the Big Brothers Big Sisters Committee.



Bernard Morris

Bernard comes with a background in the IT and Finance industries and is a member of the Big Brothers Big Sisters Committee.

EXECUTIVE & MANAGEMENT TEAMS



Julia Cambage (appointed 12 March 2013)

Chief Executive Officer

Commencing in March 2013, Julia has held a number of successful high level management roles, including most recently 9 years as CEO of Procurement Australia, 4 years as National Executive Director & Company Secretary with Family Business Australia and prior to that, as CEO of Mid North Coast Development Corporation in NSW. Julia is ideas driven and results oriented, committed to making a difference, providing clear leadership and achieving results.



Bill Bardsley (appointed 14 February 2013)

General Manager Operations

Bill has over 20 years experience working in a wide range of senior management roles in the public, private and not for profit sectors. His roles and responsibilities have encompassed Business Management, Human Resources Management, Industrial Relations and Occupational Health and Safety, people management, client relationship management, contract management, strategic and business planning, project management and financial management. Bill has worked with small teams up to companies employing 700 people. He has a passion for organisational improvement, bottom line growth and developing people and businesses to realise their potential.



Kate Linton CPA (appointed 24 June 2013)

Financial Accountant, Public Officer & Joint Company Secretary

Kate is a qualified CPA and joined TRY Australia in June 2013. She brings 20 years' experience in commercial industries such as hospitality, retail, property development, property and airport management and residential building. For the last four years, Kate has worked in the Not-for-Profit Sector and is committed to its future. She is currently completing her Masters in Social Investment and Philanthropy and is a member of the Finance & Investment Committee.



Carly Middleton *Diploma of Children's Services (Centre Based Care)*

A/General Manager Children's Services

Carly has been with TRY Australia for over 3 years and has an extensive background in not-for-profit early years services including regulatory and compliance experience with the Department of Education and Early Childhood Development.



Kevin Ekendahl *B. Business (Enterprise Development)*

General Manager Social Enterprises

Kevin has been with TRY for 4 years and is responsible for our Community Bingo Centres, Property Services, Registered Training Organization and Street Collections



Tricia Ciampa *MBA, BA (Rec)*

Executive Officer, Big Brothers Big Sisters

Starting as a Vacation Care Leader in 1995, Tricia is one of the longest-serving staff members at TRY. Taking on various roles from Doncaster Activities Centre Manager to General Manager Children's Services. In her more recent role of Executive Officer of the TRY BBBS Melbourne program, Tricia has established a range of skills and experience including change management, strategic planning and policy development.



Greg Lavis *Graduate Certificate in Business (Executive Administration) – elective pending*

Board & Company Secretary

Following a career in the public & private sectors in administration, information technology & executive support, Greg joined TRY in February 2009. Since then Greg has undertaken a variety of roles and projects. Greg's current responsibilities see him focused on supporting the CEO, managing the corporate offices and special projects, and providing support to Directors as Board and Company Secretary.

Amanda McSween

Street Collections Coordinator

Casey Welch

Events & Partnerships Coordinator

Hanna Maxwell *BA Social Science/Youth Work;*

Master Youth Services Management

Team Leader, Big Brothers Big Sisters

Matt Falcone

BA Commerce (Management)

Bingo Manager

Robyn Long

Property Services Manager

Shondeep Hazra

BA Business Information Systems

Cert IV Training and Assessment

Information Technology and Telecommunications Manager

CHILDREN'S SERVICES REPORT

TRY Australia Children's Services has continued to evolve and adapt to meet community, parent and government expectations. The dynamic nature of the early years sector is reflected in the operations of TRY Australia Children's Services. During the year under report there have been changes in Senior Management and our portfolio of children's services.

In July 2012 TRY expanded our brand into South Australia by taking over the management of the Playford Children's Centre. TRY Australia Children's Services and City of Playford worked in collaboration to ensure a smooth transition for families and staff. Playford Children's Centre is recognised as offering a valued and important service to the community of Elizabeth, a socially challenging demographical area requiring specialist services.

Whittlesea Childcare is currently undergoing major building works and relocated to a temporary alternative site. This new site is opposite the Centre and children and parents are able to watch the progress in the building of the new child care Facility. They will be excited to move back when the works are completed, mid 2014.



Under the Australian Children's Education and Care Quality Authority (ACECQA) and the Department of Education and Early Childhood Development (DEECD), an Assessment and Rating process has been introduced to rate the quality of each education and care service against

the National Quality Framework. A scale of results is possible, ranging from Excellence Award (awarded by ACECQA), Exceeding National Quality, Meeting National Quality, Working Towards National Quality and Significant Improvement Required. Several of TRY's child care were supported by our Early Years Advisers – Jenni Van and Zoe Marks, to go through the Assessment and Rating process.

The results of the 10 TRY services assessed, achieved the following ratings:

Exceeding National Quality Standards:

- Rockbank Preschool

Meeting National Quality Standards:

- Coburg Preschool
- Diggers Rest Preschool
- Harbard Street Kindergarten
- Mill Park Preschool
- Oakbrook Kindergarten
- St. Vincent de Paul Primary OSHC

Working Towards National Quality Standard:

- Fitzroy Primary OSHC
- Gladstone Park Primary OSHC
- Mernda Villages Kindergarten

Michelle O'Brien, one of our Educators, celebrated 25 years of service at Melton West Kindergarten. An afternoon tea was held to celebrate this milestone on 9 November 2012, with many current and past children and families exchanging many happy memories. The occasion showed great appreciation and value to the dedicated service Michelle has provided.

CHILDREN'S SERVICES REPORT

Once again, we congratulate and thank Michelle for her invaluable contribution to the Melton West community.



Universal Access was implemented in January 2013, which saw the introduction of 15 hours of funded kindergarten programs into Victoria. Due to extensive building works within City of Whittlesea, Mill Park Preschool was granted a waiver to continue operating at 10.75 hours for 2013, with all other services successfully transitioning to 15 hours.

A range of debt management strategies were implemented during the year to focus on the collection of outstanding Kindergarten Fees. Policies and procedures were also review and amended to ensure greater awareness of enrolment fee payment timelines. The success of these strategies will continue to be reviewed throughout the year.

TRY Australia Children's Services continues to work in partnership with and gratefully acknowledges the support of:

- Banyule City Council
- City of Kingston
- City of Melton
- City of Playford
- City of Port Phillip
- City of Whittlesea

- Community Child Care Association
- Corangamite Shire Council
- Department of Education and Early Childhood Development
- Early Learning Association Australia (formerly known as KPV)
- Hobsons Bay City Council
- Moreland City Council
- Mannington Peninsula Shire Council
- Manningham City Council
- Stonington Shire Council

We gratefully acknowledge the time and dedication shown by our early years educators, administrators and advisers. Their passion and commitment to the delivery of high quality children's services to meet the needs of local communities encapsulates TRY's mission and vision.

YOUTH MENTORING REPORT

During the period under report we have we continued to develop partnerships, further our Volunteer recruitment and most importantly, create matches to support vulnerable young people across Victoria.

Over the year a number of key outcomes were achieved including:

1. Introducing 'Thinking Big' our stakeholder newsletter
2. Continuing the First Friends program and engaging young people in activities with prospective Volunteer mentors
3. Expanding Mentoring in the Hood group mentoring programs, including a performing arts based program for young females to complement the boxing and fitness-based program for young males.

It is estimated that 20,000 hours of volunteering went into supporting nearly 500 young people across Victoria.

We matched 56 young people in a 1-to-1 relationship with an adult volunteer mentor. This is slightly down from the previous year however, the large number of staff changes and movements impacted on our ability to complete the matching process. During this time we were also able to graduate 59 matches. The overall results are very pleasing, but it is the many individual stories that continue to inspire us including matching a young woman who had been on the waiting list for over 4 years and also hearing stories from Mentors about the tiny wins they are having each week with their Littles - it's the small changes that our Mentors notice and enjoy the most.

The second year of the Study Support program was delivered at The Huddle and a pilot of the Randstad Shaping Futures program was also delivered. Both programs were innovative in their approach to supporting and connecting young people to adult mentors in their community,

assisting to strengthen their links to school and improve future career prospects of young participants.

The Young Achievers Program continues to grow, with 28 young people being matched in 2013. Career choices ranged from law, medicine, music, and human rights.

A fabulous Soiree event was held in March to celebrate the fifth year of this program. YAP participants and mentors from all five years of the program enjoyed the opportunity to reflect on their achievements and gain an appreciation of the value of networking in getting them to the next step in their career and life. Guest speakers on the day were author Alice Pung, Oscar winner Shaun Tan and past YAP mentor, Dr Bronwyn King.

All speakers shared their story about how networking and mentor support had helped influence where they were today.

The Group mentoring programs provide Big Brothers Big Sisters with an innovative approach to mentoring young people and we intend to build upon the success of these program to offer more opportunities for young people in the future.

Mentoring in the Hood continued to be a huge success this year. After the completion of "The Sisterhood" pilot last year, we formed a new group in 2013, with 13 young women participating weekly in the performing arts based program. Our "Big Brotherhood" program also continued each week, with 6 new boys joining the group at the beginning of the year.

Our First Friends initiative offered 21 Activity Days for 15-20 young people to enjoy outings including AFL matches, movies, Don Bosco Youth Centre, the Zoo, ten pin bowling and a number of other fund excursions. This initiative has assisted in screening and matching over 100 additional volunteers to a young person to participate in the

YOUTH MENTORING REPORT

activities as a 'mentor for a day'.

Through this process we have been able to partially screen many more volunteers increasing the number of potential volunteer matches.

The First Friends program provides an avenue for volunteers to be involved at a less demanding level, with the view of attracting more volunteers through this program.

Quality Assurance Project

In October 2012, Big Brothers Big Sisters Melbourne was selected to be involved in the Pilot of the Victorian Youth Mentoring Alliance (VYMA) Quality Assurance Project.

This QA Project is about providing Quality Membership Status to mentoring organisations deemed to be working within the new Australian Mentoring Benchmarks. The VYMA have been piloting the QA Project for the past 5 months with 12 mentoring organisations. Following the pilot, the QA Project will be rolled out to all mentoring organisations. Whilst not a formal accreditation, is a great opportunity for all mentoring organisations to ensure they are working within the Australian Mentoring Benchmarks and providing best practice mentoring programs. Big Brothers Big Sisters Melbourne successfully finished the pilot and has been granted Quality Membership Status with the VYMA.

We take this opportunity to thank the growing Big Brothers Big Sisters community who have helped make this year's program a success, from our exceptional team of staff who continue to demonstrate commitment and passion to their work, to our wonderful "Littles" and families who allow us to come into their lives, and very importantly, the many volunteers without whose interest in giving something back has started something BIG.

Thank you to the generous community partners, funding bodies, Trusts, and individual donors who understand the benefits and impact that youth mentoring can have in the life of a vulnerable young person.

In closing, we acknowledge the work of the BBBS team, the acting Executive Officer, Hanna Maxwell who was greatly supported by the Program Manager, Rebecca Wolstenholme and Senior Mentoring Coordinator, Nett Bailey, both of whom have worked tirelessly over the past seven years to establish and manage the Outer South East office and left BBBS earlier this year to pursue their careers.

Rebecca was instrumental in fostering relationships in the Outer South region, particularly the Shire of Cardinia. Nett Bailey established a number of group mentoring programs that enabled many young people to be matched in a group environment. Staff continue to demonstrate their passion determination to support young people in the Outer South East.



DANCING SCHOOL REPORT

The Prahran Dancing School has now been running for over 20 years with the support of three generations of the Bruce family. The 2012 Dancing concert was a great success and a wonderful opportunity for the pupils to share with their families all of their hard work and efforts from throughout the year. At present the children are busy working hard for the 2013 Concert. Thank you to the City of Stonington for their generous support of the dancing school providing use of Chapel off Chapel for weekly classes and the Malvern Town Hall for our Annual Revue.

Betty Bruce OAM

Dance Instructor

CADET UNITS



TRY SPONSORED ARMY CADET UNITS (ACU):-

30 ACU	Sunshine	101 Duke Street Sunshine 3020
32 ACU	Geelong	198 Myers Street Geelong 3220
33 ACU	Wangaratta	5 Sisley Street Wangaratta 3677
37 ACU	Wodonga	Buna Barracks Bandiana North 3694
38 ACU	Shepparton	Sobroan Street Shepparton 3630
39 ACU	Watsonia	Herring Avenue Macleod 3085
300 ACU	Ballarat	Western Hwy Ring Rd Ballarat 3350
301 ACU	Echuca	Ogilvie Street Echuca 3564
302 ACU	Oakleigh	1318 North Road Huntingdale 3166
310 ACU	Dandenong	65 Princess Hwy Dandenong Sth 3175
312 ACU	Broadford	Broadford 3658

TRAINING REPORT

TRY operates across a diverse range of dynamic highly competitive and regulated sectors. In addition, TRY continues its change management and continuous improvement journey in order to continue delivering high quality services to its clients and stakeholders. TRY's staff need to have the appropriate knowledge, skills and attitudes to build TRY to the very best that it can be and help the people it assists to do likewise.

TRY Learning is a Registered Training Organisation with the capacity to deliver a range of nationally recognised qualifications and short courses designed to meet the needs of TRY and its external customers.

By having its own internal training arm, TRY can enhance its competitive advantage by ensuring that the training is designed and delivered in a way that best meets its needs and priorities.

During 2012/13 financial year, 612 people enrolled in TRY Learning courses across 20 qualifications, including Children's Services, Construction, Hospitality, Training & Assessment, Business, Management, Vocational Preparation and General Education for Adults. Short accredited courses were also available including First Aid, CPR, Asthma and Anaphylaxis.

The training has primarily focussed on the Children's Services area, with approximately 50% of people enrolled in qualifications necessary to work in this sector. A further 17% of enrolments were in the area of entry level educational skills, particularly targeting young people and / or disadvantaged unemployed people.

TRY Learning delivers a range of other

programs to assist young people achieve qualifications in either Certificate III in Children's Services and Diploma of Children's Services (Early Childhood Education and Care). These include:

- VETis – The Vet in school program delivers the Certificate III in Children's Services qualification to year 11 & 12 students through local secondary schools. In 2012, sixteen students from eight schools and colleges participated in a combination of structured classroom and workplace learning sessions whilst undertaking their school studies.
- School Based Traineeships – A School Based traineeship is 1-2 year workplace based program offering year 11 and year 12 students the opportunity to obtain a Certificate III in Children's Services. In 2012, twenty-nine students were employed by various children's services providers as trainees, receiving monthly visits from a trainer to deliver and assess their progress in the workplace.
- Workplace Based Training – In 2012 a total of thirty-three people enrolled in either the Certificate III in Children's Services or the Diploma of Children's Services (Early Childhood Education and Care) programs. Depending on the qualification it is delivered over 1-2 years with participants working in a range of suitable children's services providers around Victoria. A TRY trainer visits the workplaces on a monthly basis to deliver and assess each participant's progress towards achieving a nationally recognised qualification.

A partnership between TRY Australia Children's Services and The Global Studio continued in Morwell during 2012 with local refugees, migrants, socially isolated women and disadvantaged people being offered the

TRAINING REPORT

opportunity to develop numeracy & literacy skills, along with personal confidence and self-esteem. The hands on programs developed these skills via participation in sewing, fashion and screen printing environments.

TRY provided Vocational Preparation, General Education for Adults and entry level construction training to over 100 disadvantaged young persons, migrants and indigenous people in the Morwell area of the Latrobe Valley. A property maintenance social enterprise also operates from TRY's Morwell offices, providing training and employment opportunities for a number of local people.

Staff at the Clayton Bingo complex, undertook training in the Responsible Serving of Alcohol, Food Handling and Certificate III in Hospitality. In addition to meeting TRY's licensing requirements, staff have been up-skilled to improve their overall employability and support the delivery of high quality customer service to our patrons.

It is worthwhile noting that during 2012, the Bingo complex hosted a Big Brothers Big Sisters (BBBS) week to raise awareness and funds for the program. The week featured several promotions including decorating the foyer in BBBS colours, flyers and posters, an information desk, games, donations and sausage sizzles, with all proceeds going to Big Brothers Big Sisters.

A number of promotions were run throughout the year for the patrons and the local community including live music, fancy dress for Halloween and a Chicken & Champagne breakfast as part of the pre-Christmas celebrations.

More events will be added during 2013-2014, including a family day with children's Easter egg

hunt, entertainment and subsidised community lunches, particularly targeting the local aged and disadvantaged people in the community.

TRY's wood working facilities in Morwell were utilised to deliver accredited training to 16 young people in Certificate I and Certificate II in Construction. Participants included young people with a wide range of disadvantaged backgrounds, many of whom would struggle in mainstream educational environments.

In addition to developing practical, entry level construction industry knowledge and skills, issues such as self-esteem, punctuality, reliability and numeracy and literacy skills were addressed during the course. The intent of the course is to improve work readiness, through the attainment of a nationally recognised qualification or to improve their potential to participate in further training and education pathways in traditional educational institutions.

MAJOR SUPPORTERS, TRUSTS AND FOUNDATIONS

Our many and varied programs and activities which benefit children and young people and their families are only made possible through the generosity of many others.

Through your support and generosity you have assisted us in making a positive contribution and a constructive impact on many thousands in our community.

The Chairman and Board of Directors thank TRY's, Volunteers and all of the nameless members of the general public who have generously provided their time and/or financial support to our programs.

We also extend sincere appreciation to all the representatives of Private Foundations and Trusts, Public and Private Companies as well as representatives of Local, State and Federal Government.

Thank you to our contributors

Corangamite Shire
City of Stonnington
Deloitte Australia
Department of Education and Early Childhood Development
Department of Families, Housing, Community Services & Indigenous Affairs
Department of Human Services
Department of Education, Employment & Workplace Relations
Elizabeth Ryder
Glen Eira City Council
Hobsons Bay City Council
Image Quest – Helen Robinett
Joe White Bequest
Ken Smith OAM
Melton Shire Council
Moreland Council
Perpetual Trustees
Whittlesea City Council

ROLL OF HONOUR

William Mark Forster – Founder: 1883 – 1921

Date	President	Date	Treasurer
1908 – 1912	Sir M H Davies – Knighted 1890	1887 – 1890	Hon James Munro MLC
1913 – 1920	Mrs S T Staughton	1891 – 1897	Mr Albert Wiseman
1921 – 1925	The Countess of Stradbroke	1898 – 1906	Mr Albert Wiseman & Mr R Rippin
1926 – 1932	Lady Somers	1907 – 1923	Mr J R Rippin
		1924 – 1936	Mr E H M Ratcliff
Date	Vice President	1937 – 1941	Mr J C Pickford
1933 - 1936	Sir George Wales	1942 – 1960	Mr L W Foster
1937 – 1957		1961 – 1962	Mr M S Peden
		1963 – 1964	Mr G M Lloyds
Date	President	1965 – 1969	Mr W C Faulkner
1957 – 1959	Mr L W Forster	1970 – 1971	Mr R C Barrett
1959 – 1960	Mr Richard L Daniell	1971 – 1976	Mr Peter Dredge
1960 – 1969	Mr N Peter Andrews	1976 – 1977	Mr J B Hayton
1969 – 1998	Mr Ken Smith OAM	1977 – 2000	Mr Peter Dredge
1998 – 1999	Mr Peter Gilchrist CPA	2000 – 2007	Mr Ken Scott FCA
1999 – 2003	Mr Stuart Southwick OAM JP	2007 – 2009	Mr Ian Brown
2003 – 2007	Mr Kevin J McNeill JP	2009 – 2012	Ms Jovita Gartlan
2007 – Present	Ms Helen Robinett	2012 - Present	Mr Craig Bryan
Date	Secretary	Date	Chief Executive Officer
1887 – 1897	Mr John Darroh	1956 – 1981	Mr Ken N Baldwin BEM
1908 – 1921	Mr F E Pausacker	1981 – 2003	Mr Kevin J McNeill JP
1921 – 1922	Mr J C Butler	2003 – 2007	Mr John Lanza
1922 – 1939	Mr W T Hughes-Jones	2007 – 2012	Mr Damien Mowlam
1940 – 1941	Mr Hugh Philip FVSA	2013 – Present	Ms Julia Cambage
1941 – 1948	Mr N Burns-Priddle		
1948 - 1956	Mr H S Thorogood		
2012 – Present	Mr Greg Lavis		



TRY

AUSTRALIA
hand in hand

Government Pavilion

Showgrounds Village – P1

320 – 380 Epsom Road

FLEMINGTON, VIC 3031 AUSTRALIA

 9347 2655 |  9348 1273

 info@try.org.au |  www.try.org.au